

SPAMMAIL (uønskede henvendelser i den elektroniske postkasse)

De mails, som ATZnets spamfilter fanger, vil i emnelinien blive markeret med ordet "spam" i klammer [spam]. Bemærk at der er forskel på en parentes og en klamme.

Emnelinien kunne eksempelvis se sådan ud:
[Spam] Up to 25 - 80% savings on your ink products

For at foretage en sortering af spammails kan det være hensigtsmæssigt at oprette en postregel som kan sikre at alle de markerede meddelelser automatisk bliver anbragt i et separat bibliotek, så man ved lejlighed kan gennemse og eventuelt slette alle disse uønskede meddelelser på én gang.

Oprette en postregel:

Man opretter en postregel ved at markere en meddelelse i indbakken og trykke på menupunktet MESSAGE i menubaren øverst i vinduet.

Her vælger man så CREATE NEW RULE FROM MESSAGE

Man får så nedenstående dialogboks

New Mail Rule ? X

Select your Conditions and Actions first, then specify the values in the Description.

1. Select the Conditions for your rule:

- Where the From line contains people
- Where the Subject line contains specific words
- Where the message body contains specific words
- Where the To line contains people

2. Select the Actions for your rule:

- Move it to the specified folder
- Copy it to the specified folder
- Delete it
- Forward it to people

3. Rule Description (click on an underlined value to edit it):

Apply this rule after the message arrives
Where the Subject line contains specific words
Move it to the specified folder

4. Name of the rule:

New Mail Rule #2

OK Cancel

Punkt 1

Her sætter man flueben ved WHERE THE SUBJECT LINE CONTAINS SPECIFIC WORDS

Punkt 2

Her sætter man flueben ved MOVE TO THE SPECIFIED FOLDER

New Mail Rule ? X

Select your Conditions and Actions first, then specify the values in the Description.

1. Select the Conditions for your rule:

- Where the From line contains people
- Where the Subject line contains specific words
- Where the message body contains specific words
- Where the To line contains people

2. Select the Actions for your rule:

- Move it to the specified folder
- Copy it to the specified folder
- Delete it
- Forward it to people

3. Rule Description (click on an underlined value to edit it):

Apply this rule after the message arrives
Where the Subject line contains specific words
Move it to the specified folder

4. Name of the rule:

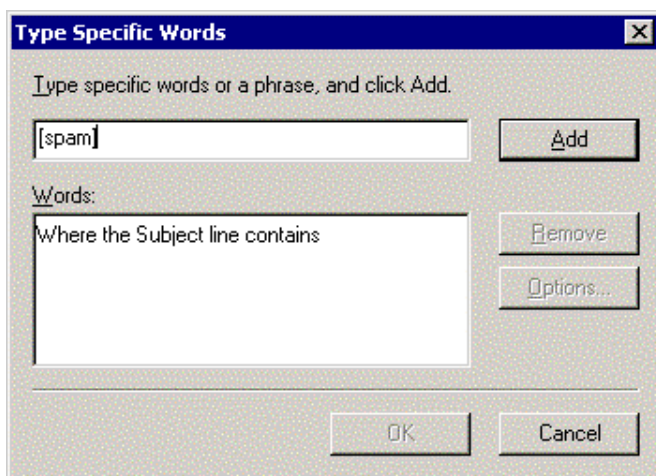
New Mail Rule #2

OK Cancel

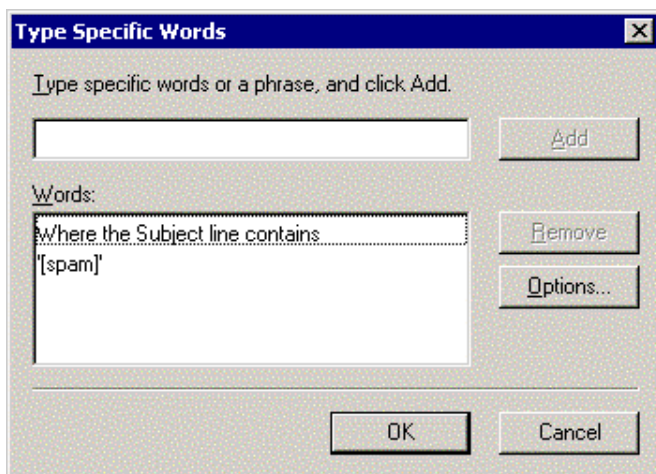
Punkt 3

Her klikker man på ordene CONTAINS SPESIFIC WORDS

Der kommer nu en boks hvor man taster som vist nedenfor:



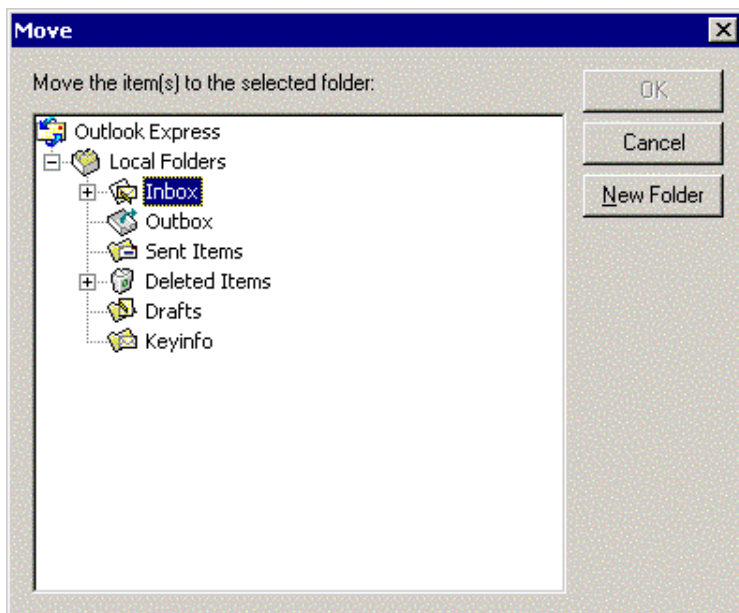
Tryk på knappen ADD
Nu ser boksen således ud:



Tryk på OK.

Tryk på ordet SPECIFIED i sætningen **Copy it to the [specified](#) folder** i vinduet under punkt 3

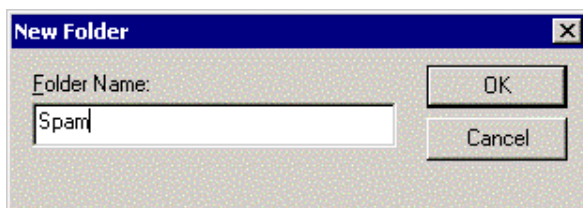
Nedenstående vindue ses nu:



Her stiller man kursoren på INBOX og klikker på knappen NEW FOLDER.

Man opretter nu en ny undermappe under mappen "Inbox". Man kan f. eks. kalde den for SPAM.

Tast ordet SPAM i feltet og tryk på OK (se nedenfor).



Mappen SPAM i vinduet til venstre er nu oprettet og markeret. Der trykkes nu på OK knappen.

Nu får man nedenstående boks:

New Mail Rule ? X

Select your Conditions and Actions first, then specify the values in the Description.

1. Select the Conditions for your rule:

- Where the From line contains people
- Where the Subject line contains specific words
- Where the message body contains specific words
- Where the To line contains people

2. Select the Actions for your rule:

- Move it to the specified folder
- Copy it to the specified folder
- Delete it
- Forward it to people

3. Rule Description (click on an underlined value to edit it):

Apply this rule after the message arrives
Where the Subject line contains {spam}
Copy it to the Spam folder

4. Name of the rule:

New Mail Rule #2

OK Cancel

Punkt 4

Man taster nu et navn til postreglen under punkt NAME OF THE RULE.
Det kunne f.eks. være SPAMSORTERING.

Tryk på OK knappen.

Postreglen er nu oprettet.

Alle meddelelser som i emnelinien indeholder (spam) vil efterfølgende blive anbragt i undermappen SPAM under mappen INBOX.